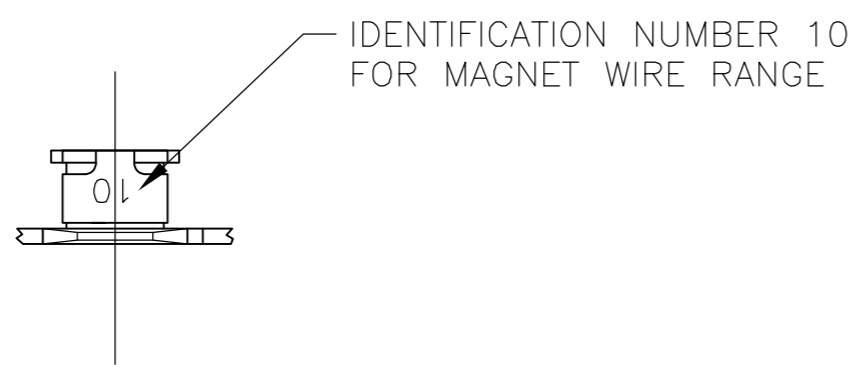
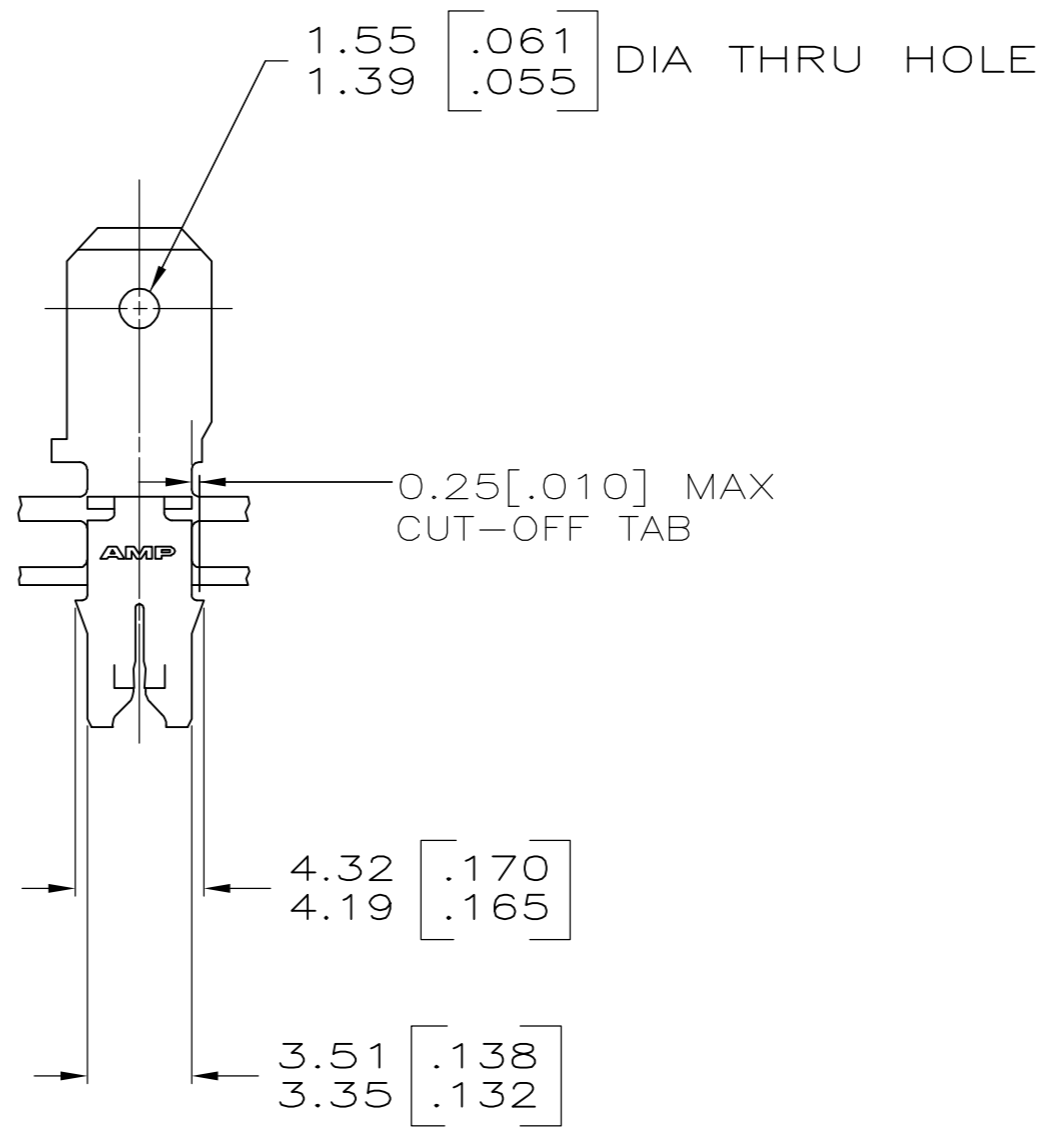
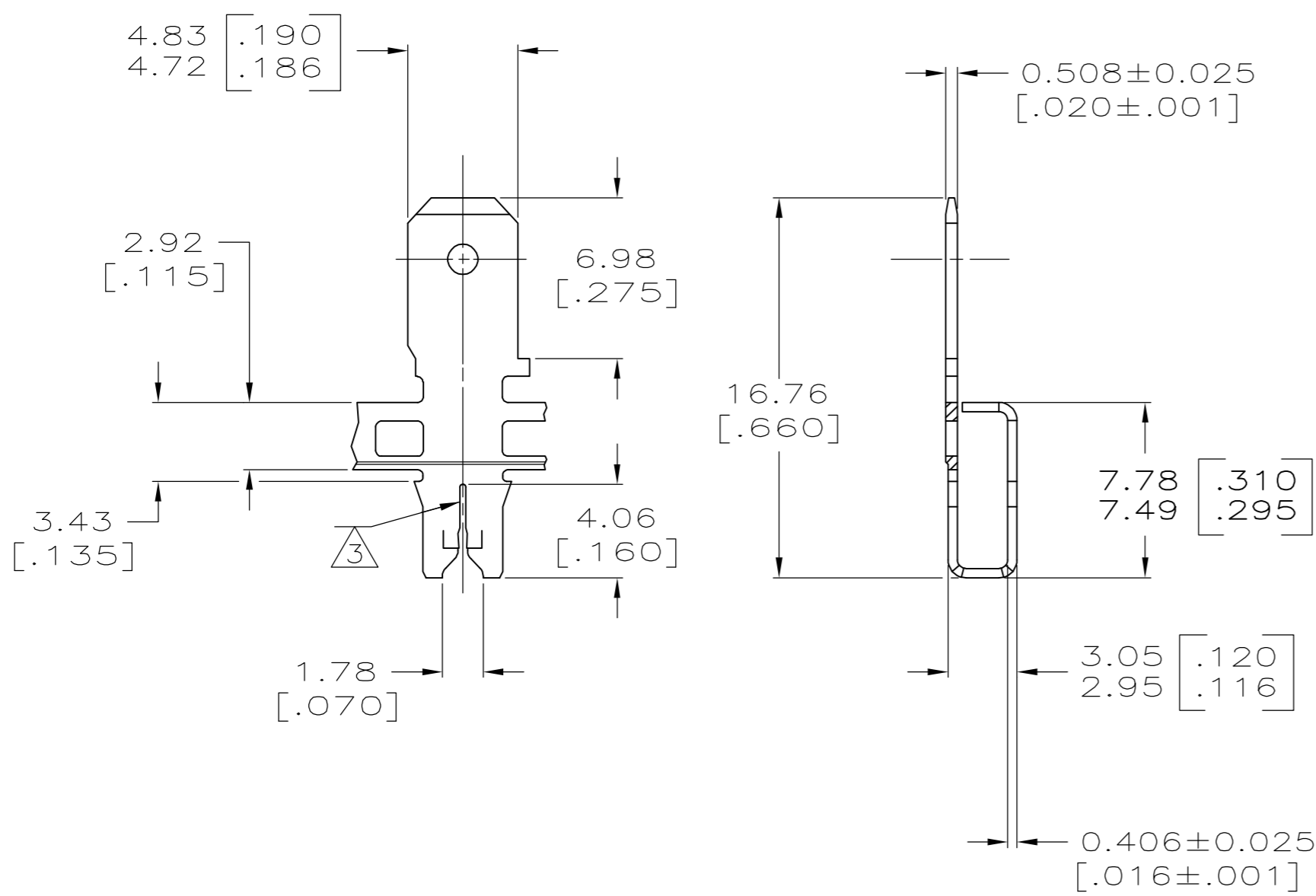


THIS DRAWING IS UNPUBLISHED. RELEASED FOR PUBLICATION
 © COPYRIGHT BY TYCO ELECTRONICS CORPORATION. ALL RIGHTS RESERVED.

LOC	DIST	REVISIONS			
P	LTR	DESCRIPTION	DATE	DWN	APVD
AF	50	B	REVISED PER OG3A-0067-05	7FEB05	MF KR



- 1 CONTINUOUS STRIP ON REELS WITH TERMINALS LOCATED ON 5.59±0.08 [.220±.003] CENTERS.
- 2 AFTER INSERTION INTO PLASTIC HOLDER TAB PORTION MUST BE BENT 45° TO 90° OR POTTED-IN TO PREVENT PULL-OUT WHEN MATING RECEPTACLE IS DISCONNECTED.
- 3 SLOT TERMINATES EITHER SINGLE OR DOUBLE MAGNET WIRE OF THE SAME SIZE AND TYPE. COPPER RANGE: 0.36-0.57mm [#27-#23] AWG.
- 4 0.002032 [.000080] MIN TIN PLATE.



4		63585-1	
FINISH		PART NUMBER	
		Tyco Electronics Corporation Harrisburg, Pa 17105-3608	
NAME		TAB, 4.75 [.187] FASTON, 300 SERIES MAG-MATE	
SIZE	CAGE CODE	DRAWING NO	RESTRICTED TO
A2	00779	C=63585	-
SCALE		SHEET	OF
4:1		1	1
CUSTOMER DRAWING		REV	B

THIS DRAWING IS A CONTROLLED DOCUMENT.		DWN	7FEB2005
		CHK	7FEB2005
		APVD	7FEB2005
		PRODUCT SPEC	108-2012
		APPLICATION SPEC	114-2046
		WEIGHT	-
		CUSTOMER DRAWING	

DIMENSIONS:	TOLERANCES UNLESS OTHERWISE SPECIFIED:
INCHES	
0 PLC	± -
1 PLC	± -
2 PLC	± -
3 PLC	± 0.25 [.010]
4 PLC	± -
ANGLES	± -
FINISH	SEE TABLE

63585

A